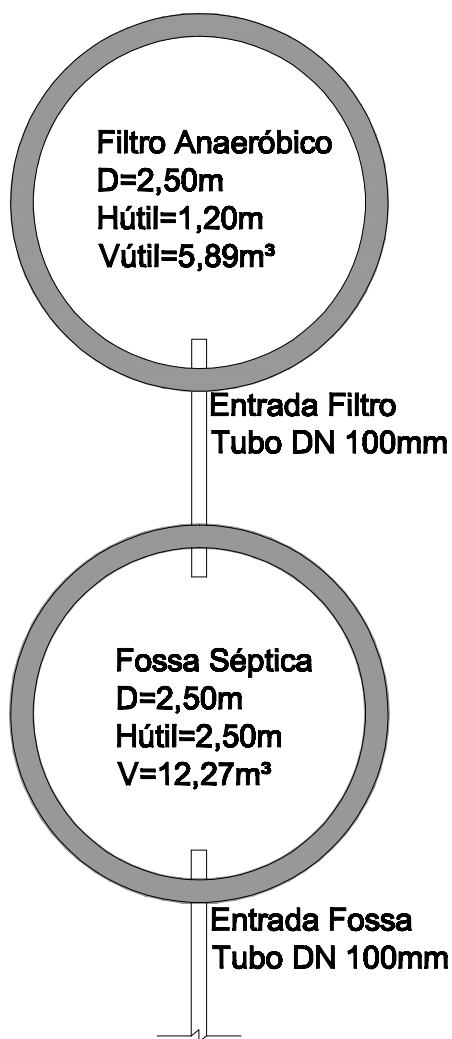


PLANTA BAIXA

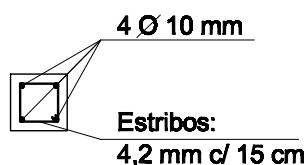
Escala: 1/50



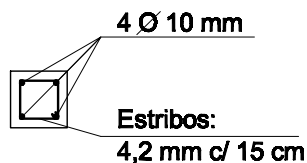
DETALHAMENTO FERRAGEM

Escala: 1/20

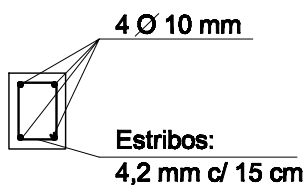
PILARES



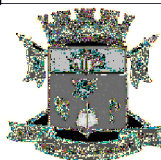
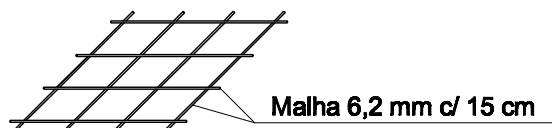
VIGAS DE AMARRAÇÃO



VIGA DE BALDRAME



FERRAGEM LAJE TAMPAS E FUNDO



PREFEITURA MUNICIPAL DE SANTANA DO LIVRAMENTO
SEPLAMA - SECRETARIA DE PLANEJAMENTO - DEPARTAMENTO DO PLANO DIRETOR
RUA SETE DE SETEMBRO, 515. CEP 97573-471. FONE: (55) 3242-2174

UBS TABATINGA
Planta Baixa e Detalhamento Ferragem
- Fossa Séptica e Filtro Anaeróbico -

Elenice do Espírito Santo

Paulo Rogério Krug

Engenheira Civil
CREA 151.098

Arquiteto
CREA: RS 79916

ESCALAS:

DATA: Junho de 2011

PRANCHA: AR -2.1